

**ATTENTION RESIDENTS IN AND
AROUND CENTRAL MANCHESTER
NEW MEASURES IMPLEMENTED AT
MANDEVILLE REGIONAL HOSPITAL
(MRH)**



1. MRH will go into full emergency mode with immediate effect.
2. All nonessential services will be curtailed or suspended.
3. Elective surgeries will be suspended until further notice.
4. Outpatients clinics will be closed or drastically scaled back.
5. Measures will be implemented by each department to ensure continuity of care for patients who need close follow up.

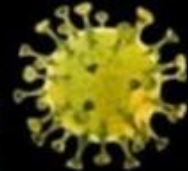


1-5

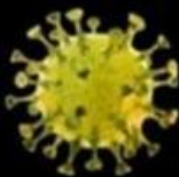
Notice from Chairman of SRHA
#COVID19JA
#COVID19JAMAICA

If you have COVID-19 concerns please contact Ministry of Health &
Wellness hotline- 888-ONE-LOVE, 876-342-5998, 876-342-4007,
876-342-6004

**ATTENTION RESIDENTS IN AND
AROUND CENTRAL MANCHESTER
NEW MEASURES IMPLEMENTED AT
MANDEVILLE REGIONAL HOSPITAL
(MRH)**



6. Non-urgent cases will be re-booked/given long appointments (3 - 4 months).
7. Staff will be available to see urgent cases on merit
8. Some departments will scale back to one clinic day per week, to see only urgent cases.
9. Medical records to pull the dockets for clinics two days in advance so that determinations can be made as to who can be rescheduled and who needs to be seen. Patients will be contacted by phone where possible.



2-5

Notice from Chairman of SRMS
#COVID19JA
#COVID19JAMAICA

If you have COVID-19 concerns please contact Ministry of Health &
Wellness hotline- 888-ONE-LOVE, 876-542-3998, 876-542-6007,
876-542-6004.

**ATTENTION RESIDENTS IN AND
AROUND CENTRAL MANCHESTER
NEW MEASURES IMPLEMENTED AT
MANDEVILLE REGIONAL HOSPITAL
(MRH)**



10. A tent to be set up where patients can be housed and allowed into the clinic area in small batches.
11. Single point of entry for ambulatory patients and visitors.
12. All patients and visitors to be screened on arrival (history of fever, respiratory symptoms, travel history, temperature check).
13. An identifying arm/wrist band be given to those who have been cleared.
14. Hand sanitizing for all persons allowed to enter.

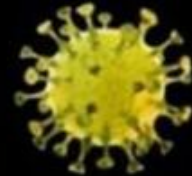


3-5

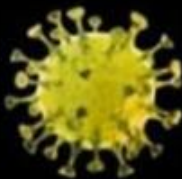
Notice from Chairman of SRHA
#COVID19JA
#COVID19JAMAICA

If you have COVID-19 concerns please contact Ministry of Health &
Wellness hotline- 888-ONE-LOVE, 876-542-5998, 876-542-6007,
876-542-9006

**ATTENTION RESIDENTS IN AND
AROUND CENTRAL MANCHESTER
NEW MEASURES IMPLEMENTED AT
MANDEVILLE REGIONAL HOSPITAL
(MRH)**



15. Patients with symptoms be given a face mask and directed to the designated area for triage.
16. Need to ensure availability of masks, bins and hand sanitizers at entrance.
17. Visitations limited to reduce the number of persons on the ward / in the hospital.
18. One named visitor per patient, per day (name to be given on admission and noted in the chart).
19. Duration of visit limited to thirty minutes.



4-5

Notice from Director of SHHS
#COVID19JA
#COVID19JAMAICA

If you have COVID-19 concerns please contact Ministry of Health & Wellness hotline: 888-ONE-LOVE, 876-541-5998, 876-541-6007, 876-541-6006

**ATTENTION RESIDENTS IN AND
AROUND CENTRAL MANCHESTER
NEW MEASURES IMPLEMENTED AT
MANDEVILLE REGIONAL HOSPITAL
(MRH)**

20. Visiting hours remain as is.

21. Staggered work assignments to reduce number of staff in hospital at the same time, limited interaction between staff and limited number of staff in contact with suspected cases.



5-5

Notice from Chairman of SRMA
#COVID19JA
#COVID19JAMAICA

If you have COVID-19 concerns please contact Ministry of Health &
Wellness hotline- 888-ONE-LOVE, 876-542-5999, 876-542-6007,
876-542-6004